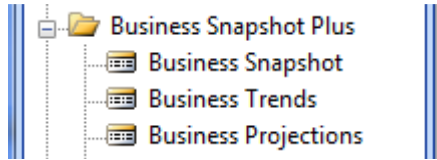


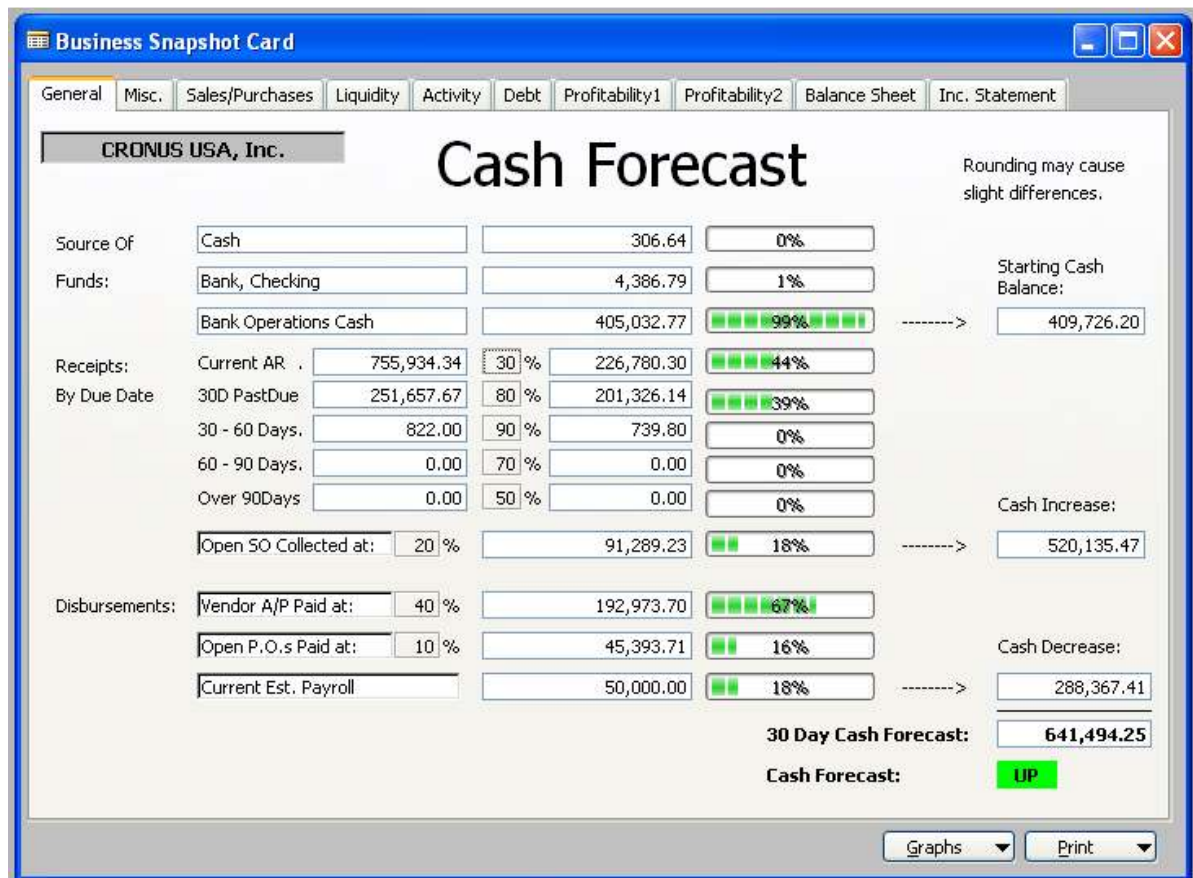
Business Snapshot Plus

Business Snapshot Plus is a quick and easy way to see your business status “At-A-Glance”. There are 3 Components:



1. Business Snapshot – Where you are today
2. Business Trends – Where you have been
3. Business Projections – What does the future look like

Here is the General Tab of “Business Snapshot” for a 30 Day Cash Forecast.



Business Snapshot Plus extends the original “Business Snapshot” with many enhancements:

1. Business Snapshot’s own security
2. Graphs
3. Drillable fields where available
4. A new section for “Trend” Views
5. User definable Views
6. Trends of Past Sales and Activity
7. Projections for future Sales and Payables.

Here is a trend view with user defined COA and comparisons of this year to last year.

The screenshot shows a software window titled "SUPER - Account Balances". It has a menu bar with "Quick Accounts", "Current Statistics", "Sales History", "Balance Statements", and "Income Statements". Below the menu bar are filters for "Department Filter" and "Project Filter", an "Update" button, and a checkbox for "Disable Filters for Quick Accounts". The main area contains a table with the following data:

Balance Accounts		2 Months Ago	Last Month	Current MTD	Current YTD	Prior Year MTD	Prior Year YTD
Income Accounts							
No.	Name	11/01/08..11/30/08	12/01/08..12/31/08	01/01/09..01/31/09	01/01/09..01/31/09	01/01/08..01/31/08	01/01/08..01/31/08
41300	Total Sales of Jobs	0.00	0.00	0.00	0.00	0.00	0.00
41500	Total Sale of Serv. Contr...	0.00	0.00	0.00	0.00	0.00	0.00
42100	Sales, Resources - Dom.	0.00	0.00	-30,461.00	-30,461.00	0.00	0.00
42200	Sales, Resources - EU	0.00	0.00	0.00	0.00	0.00	0.00
42300	Sales, Resources - Export	0.00	0.00	0.00	0.00	0.00	0.00
42400	Job Sales Adjmt., Resou...	0.00	0.00	0.00	0.00	0.00	0.00
43100	Sales, Raw Materials - D...	-880,284.16	-965,124.29	-557.00	-557.00	-582,767.48	-582,767.48
43200	Sales, Raw Materials - EU	-319,778.55	0.00	-111.40	-111.40	-244,909.87	-244,909.87
43300	Sales, Raw Materials - E...	0.00	-290,272.21	0.00	0.00	0.00	0.00
43400	Job Sales Adjmt., Raw Mat.	0.00	0.00	0.00	0.00	0.00	0.00
44500	Total Sales of Retail	-170,789.35	-141,999.57	-80,982.66	-80,982.66	-141,703.21	-141,703.21
45000	Consulting Fees - Dom.	-23,512.50	-28,777.50	0.00	0.00	-28,125.00	-28,125.00
49950	Total Revenue	-1,298,456.02	-1,159,594.90	122,090.36	122,090.36	-971,578.32	-971,578.32
		0.00	0.00	0.00	0.00	0.00	0.00
		0.00	0.00	0.00	0.00	0.00	0.00

At the bottom of the window are "Print" and "Close" buttons.

Business Snapshot Plus key Features:

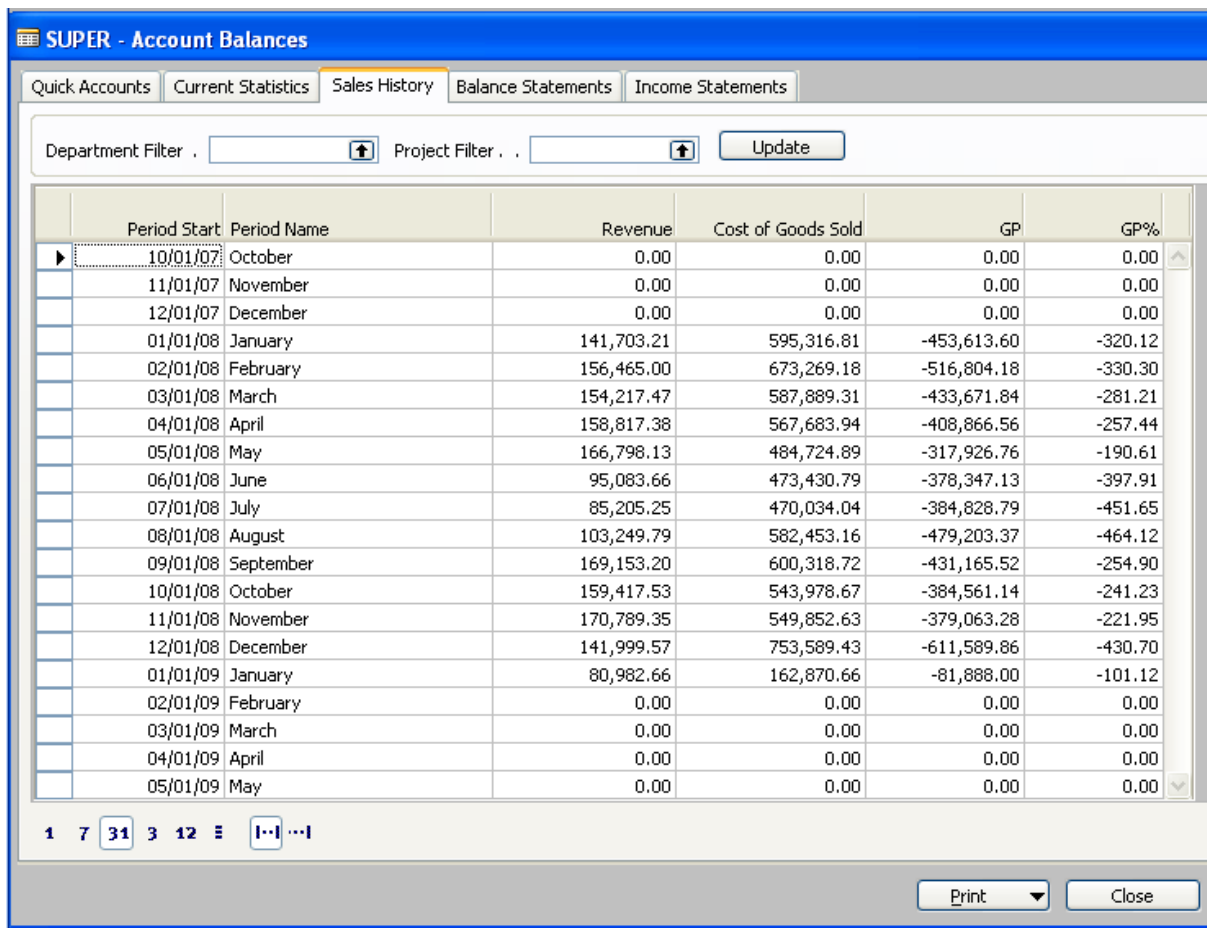
Customizable Quick Account Access – quickly and easily choose the accounts that you want to see!

Current Statistics – ‘real time’ information about your accounts!

Sales History – a statistics window that allows you to change the information you see into the format you want to see it!

Prior Year Comparisons at a glance.

Trend Views with Revenue, COGS, Gross Profit, and Profit Percent. View in user defined time periods. Apply Dimensions to View.



The screenshot displays the 'SUPER - Account Balances' application window. The 'Sales History' tab is active, showing a table of monthly financial data. The table includes columns for 'Period Start', 'Period Name', 'Revenue', 'Cost of Goods Sold', 'GP', and 'GP%'. The data spans from October 2007 to May 2009. The interface also features filter fields for 'Department Filter' and 'Project Filter', an 'Update' button, and a pagination control at the bottom showing '1 7 31 3 12'.

Period Start	Period Name	Revenue	Cost of Goods Sold	GP	GP%
10/01/07	October	0.00	0.00	0.00	0.00
11/01/07	November	0.00	0.00	0.00	0.00
12/01/07	December	0.00	0.00	0.00	0.00
01/01/08	January	141,703.21	595,316.81	-453,613.60	-320.12
02/01/08	February	156,465.00	673,269.18	-516,804.18	-330.30
03/01/08	March	154,217.47	587,889.31	-433,671.84	-281.21
04/01/08	April	158,817.38	567,683.94	-408,866.56	-257.44
05/01/08	May	166,798.13	484,724.89	-317,926.76	-190.61
06/01/08	June	95,083.66	473,430.79	-378,347.13	-397.91
07/01/08	July	85,205.25	470,034.04	-384,828.79	-451.65
08/01/08	August	103,249.79	582,453.16	-479,203.37	-464.12
09/01/08	September	169,153.20	600,318.72	-431,165.52	-254.90
10/01/08	October	159,417.53	543,978.67	-384,561.14	-241.23
11/01/08	November	170,789.35	549,852.63	-379,063.28	-221.95
12/01/08	December	141,999.57	753,589.43	-611,589.86	-430.70
01/01/09	January	80,982.66	162,870.66	-81,888.00	-101.12
02/01/09	February	0.00	0.00	0.00	0.00
03/01/09	March	0.00	0.00	0.00	0.00
04/01/09	April	0.00	0.00	0.00	0.00
05/01/09	May	0.00	0.00	0.00	0.00

Mini Balance Sheet and Income Statement with user defined details.

SUPER - Account Balances

Quick Accounts | Current Statistics | Sales History | **Balance Statements** | Income Statements

No.	Name	Current Balance at Date	Prior Year Balance at Date	Net Change
10000	ASSETS			
11700	Liquid Assets, Total	420,612.51	632,768.81	-212,156.30
12300	Securities, Total	18,278.46	18,278.46	
13400	Accounts Receivable, Total	1,411,375.67	732,697.50	678,678.17
13540	Purchase Prepayments, Total			
14500	Inventory, Total	1,695,817.54	1,410,362.82	285,454.72
15950	Current Assets, Total	3,545,948.05	2,794,107.59	751,840.46
18950	Fixed Assets, Total	1,763,608.18	2,101,852.13	-338,243.95
19950	TOTAL ASSETS	5,309,556.23	4,895,959.72	413,596.51
20000	LIABILITIES AND EQUITY			
25995	Total Liabilities	-3,453,607.63	-3,480,748.52	27,140.89
30000	EQUITY			
30400	Net Income for the Year	-653,385.71	-212,648.31	-440,737.40
30500	Total Stockholder's Equity	-1,855,948.60	-1,415,211.20	-440,737.40
39950	TOTAL LIABILITIES AND EQUI...	-4,656,170.52	-4,683,311.41	27,140.89
59999	GROSS PROFIT	-5,840,907.27	-397,123.55	-5,443,783.72

Print Close

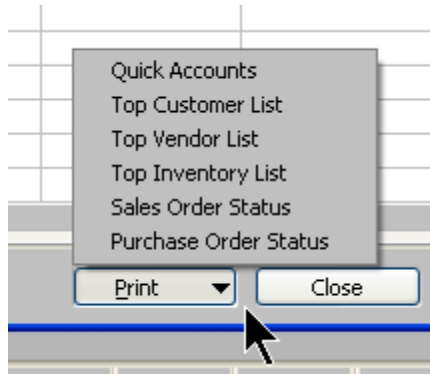
SUPER - Account Balances

Quick Accounts | Current Statistics | Sales History | **Balance Statements** | Income Statements

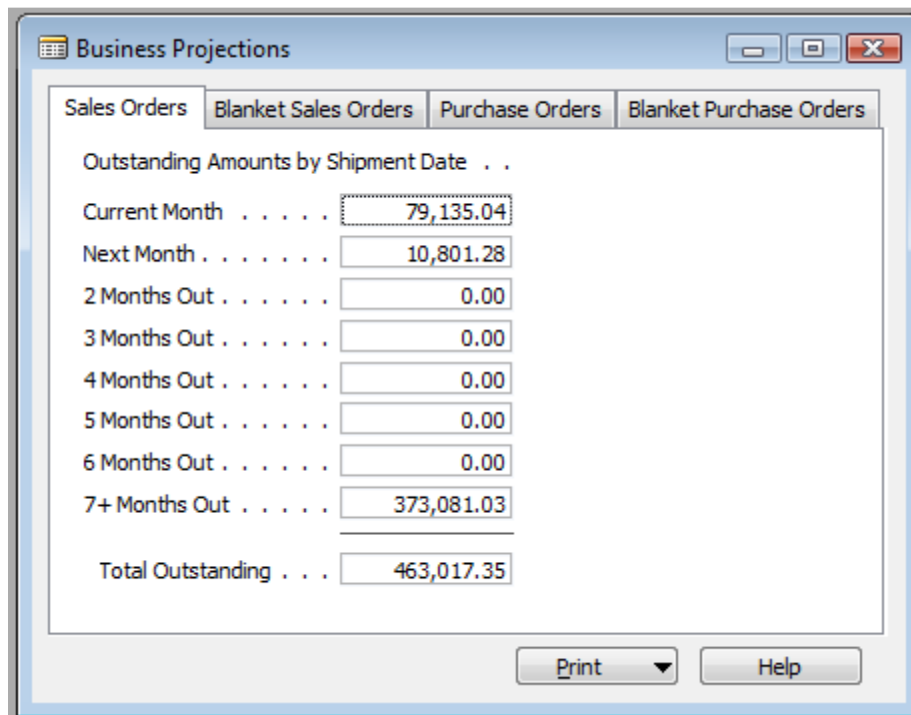
Department Filter Project Filter Update Current Month 01/01/09..01/31/09

No.	Name	MTD	YTD	Prior MTD	Prior YTD
40000	Revenue				
41300	Total Sales of Jobs				
41500	Total Sale of Serv. Contracts				
42500	Total Sales of Resources	-30,461.00	-30,461.00		
43500	Total Sales of Raw Materials	-668.40	-668.40	-827,677.35	-827,677.35
44500	Total Sales of Retail	-80,982.66	-80,982.66	-141,703.21	-141,703.21
49950	Total Revenue	122,090.36	122,090.36	-971,578.32	-971,578.32
50000	Cost				
59950	Total Cost	162,870.66	162,870.66	595,316.81	595,316.81
60000	Operating Expenses				
69950	Total Operating Expenses	3,694.66	3,694.66	353,870.46	353,870.46
69999	Net Operating Income				

Most requested reports on form for instant hard copy



The “Business Projections” option has been added to project Sales from Sales Order or Blanket Sales Orders. You can also see pending Purchase Orders and Blanket Purchase Orders for a clear picture of Sales and Cash Requirements.



“Business Snapshot Plus” Key Benefits:

You know all the time where the cash is.

You can make better decisions with timely information.

Keep your banker better informed.

No re-entry into spreadsheet to get this information.

This information is provided by:

Cost Control Software, Inc.

15443 Oak Road
Carmel, IN 46033

P: 317-846-6025

F: 317-566-1526